

SPEC SHEET + MEASUREMENTS

Brooks Brothers

Brooks Brothers® Women's Cotton Stretch V-Neck Sweater. BB18401

Product photo



A super-soft evolution of the classic sweater silhouette, designed for year-round layering and unsurpassed comfort.

- 70/30 pima cotton/nylon
- Full-fashioned throughout
- 1x1 rib neck, cuffs and hem
- Back shoulder seam

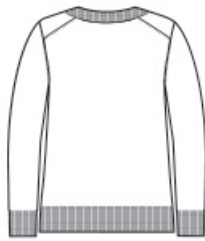
CARE INSTRUCTIONS

Machine Wash Cold With Like Colors. Gentle Cycle. Only Non-Chlorine Bleach When Needed. Reshape And Lay Flat To Dry. Cool Iron If Necessary.

Sketches



front



back

SPEC SHEET + MEASUREMENTS



Brooks Brothers® Women's Cotton Stretch V-Neck Sweater. BB18401

PRODUCT MEASUREMENTS

	XS	S	M	L	XL	2XL	3XL	4XL
Size	2	4/6	8/10	12/14	16/18	20/22	24/26	28/30
Body Length at Back	24 1/4	24 3/4	25 1/4	25 3/4	26 1/4	26 3/4	27 1/4	
Bust	18	19	20	21 1/2	23	24 1/2	26 1/2	28 1/2
Sleeve Length from Center Back	31	31 1/2	32	32 5/8	33 1/4	33 7/8	34 1/4	34 5/8

Body Length at Back: Measured from high point shoulder to finished hem at back.

Bust: Measured across the chest one inch below armhole when laid flat.

Sleeve Length from Center Back: Measure from Center Back neck to shoulder point to sleeve hem.

SIZE CHARTS

	XS	S	M	L	XL	2XL	3XL	4XL
Size	2	4/6	8/10	12/14	16/18	20/22	24/26	28/30
Bust	32-34	35-36	37-38	39-41	42-44	45-47	48-51	52-55

SPEC SHEET + MEASUREMENTS



Brooks Brothers® Women's Cotton Stretch V-Neck Sweater. BB18401

HOW TO MEASURE



BUST

Measure under the arm and around the fullest part of the bust with arms down, keeping tape horizontal.

COLORS

Please note: PMS code information is shown only when an exact match is available.



Deep Black
PMS BLACK
C



Light Shadow
Grey Heather



Navy Blazer
PMS 533C



Pearl Pink
PMS 705C