

# SPEC SHEET + MEASUREMENTS

**PORT&CO.**

Port & Co<sup>™</sup> Core Blend 3/4-Sleeve Raglan Tee. PC55RS

## Product photo



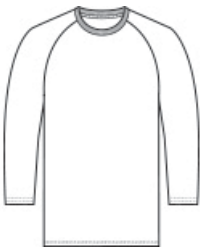
A classic, moisture-wicking team look at a great value.

- 5.5-ounce, 50/50 cotton/poly
- Made with up to 5% recycled polyester from plastic bottles
- Removable tag for comfort and relabeling
- Rib knit collar
- Back neck tape

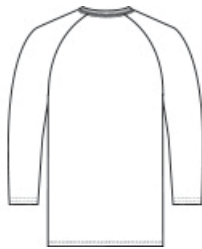
## CARE INSTRUCTIONS

Machine wash cold inside out with like colors. Only non-chlorine bleach when needed. Tumble dry medium. Do not iron.

## Sketches



front



back

# SPEC SHEET + MEASUREMENTS

**PORT&CO.**

Port & Co<sup>™</sup> Core Blend 3/4-Sleeve Raglan Tee. PC55RS

## PRODUCT MEASUREMENTS

	S	M	L	XL	2XL	3XL	4XL
Chest	18	20	22	24	26	28	30
Body Length at Back	28	29	30	31	32	33	34
Sleeve Length	26 1/4	27	27 3/4	28 1/2	29 1/4	30	30 3/4

**Chest:** Measured across the chest one inch below armhole when laid flat.

**Body Length at Back:** Measured from high point shoulder to finished hem at back.

**Sleeve Length:** Start at center of neck and measure down shoulder, down sleeve to hem.

## SIZE CHARTS

	XS	S	M	L	XL	2XL	3XL	4XL
Chest	32-34	35-37	38-40	41-43	44-46	47-49	50-53	54-57

## HOW TO MEASURE



### CHEST

Measure under the arm and around the fullest part of the chest with arms down, keeping tape horizontal.







# SPEC SHEET + MEASUREMENTS

**PORT&CO.**

Port & Co<sup>™</sup> Core Blend 3/4-Sleeve Raglan Tee. PC55RS

## COLORS

Please note: PMS code information is shown only when an exact match is available.

					
Athletic Heather/ Jet Black PMS Black 6 C	Athletic Heather/ Navy PMS 2380 C	White/ Jet Black PMS Black 6 C	White/ Navy PMS 2380 C	White/ Red PMS 200 C	White/ Royal PMS 2133 C