

SPEC SHEET + MEASUREMENTS

BELLA+CANVAS.

BELLA+CANVAS® Women's Triblend Short Sleeve Tee.
BC8413

Product photo

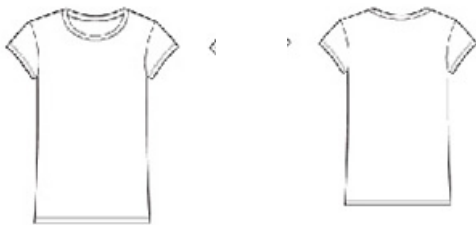


- Slim fit
- Tear-away label
- Side seamed
- Triblend Colors: 3.8-ounce, 50/25/25 poly/Airlume combed and ring spun cotton/rayon, 40 singles
- Black Heather Triblend: 70/15/15 Airlume combed and ring spun cotton/poly/rayon

CARE INSTRUCTIONS

Machine wash warm, inside out, with like colors. Only non-chlorine bleach. Tumble dry low. Medium iron. Do not iron decoration. Do not dry clean.

Sketches



front

back

SPEC SHEET + MEASUREMENTS

BELLA+CANVAS

BELLA+CANVAS® Women's Triblend Short Sleeve Tee.
BC8413

PRODUCT MEASUREMENTS

| | S | M | L | XL | 2XL |
|---------------------|--------|--------|--------|--------|--------|
| Size | 4/6 | 8/10 | 12/14 | 16/18 | 20/22 |
| Body Length at Back | 26 | 26 1/2 | 27 1/8 | 27 3/4 | 28 3/8 |
| Chest | 15 3/4 | 16 1/2 | 17 1/2 | 18 1/2 | 19 1/2 |

Body Length at Back: Measured from high point shoulder to finished hem at back.

Chest: Measured across the chest one inch below armhole when laid flat.

SIZE CHARTS

| | S | M | L | XL | 2XL |
|-------|-------|-----------|----------------|----------------|----------------|
| Size | 6-8 | 8-10 | 10-12 | 14-18 | 20-22 |
| Chest | 30-32 | 32-33 1/2 | 33 1/2- 35 1/2 | 35 1/2- 37 1/2 | 37 1/2- 39 1/2 |

SPEC SHEET + MEASUREMENTS

BELLA+CANVAS

BELLA+CANVAS® Women's Triblend Short Sleeve Tee.
BC8413

HOW TO MEASURE



BUST

Measure under the arm and around the fullest part of the bust with arms down, keeping tape horizontal.

COLORS

Please note: PMS code information is shown only when an exact match is available.



Grey Triblend
PMS 416CP



Navy Triblend
PMS 289U