

SPEC SHEET + MEASUREMENTS

SPORT-TEK

Sport-Tek® Long Sleeve Digi Camo Tee. ST460LS

Product photo



A subtle digi camo pattern gives this moisture-wicking, breathable performance tee a unique edge.

- 3.8-ounce, 100% polyester interlock with sublimated digi camo print
- Removable tag for comfort and relabeling
- Digi camo print on sleeves

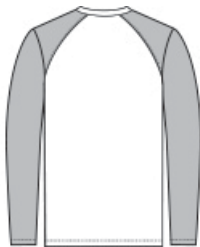
CARE INSTRUCTIONS

Machine wash cold with like colors. Do not use fabric softener. Do not bleach. Tumble dry low. Remove promptly. Cool iron if needed. Do not dry clean.

Sketches



front



back

SPEC SHEET + MEASUREMENTS



Sport-Tek® Long Sleeve Digi Camo Tee. ST460LS

PRODUCT MEASUREMENTS

	XS	S	M	L	XL	2XL	3XL	4XL
Body Length at Back	27	28	29	30	31	32	32 1/2	33
Chest	18	19 1/2	21	22 1/2	24	25 1/2	27 1/2	29 1/2
Sleeve Length from Center Back	34 1/2	35 1/4	36	36 3/4	37 1/2	38 1/4	39	39 3/4

Body Length at Back: Measured from high point shoulder to finished hem at back.

Chest: Measured across the chest one inch below armhole when laid flat.

Sleeve Length from Center Back: Measure from Center Back neck to shoulder point to sleeve hem.

SIZE CHARTS

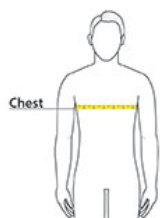
	XS	S	M	L	XL	2XL	3XL	4XL
Chest	32-34	35-37	38-40	41-43	44-46	47-49	50-53	54-57

SPEC SHEET + MEASUREMENTS



Sport-Tek® Long Sleeve Digi Camo Tee. ST460LS

HOW TO MEASURE



CHEST

Measure under the arm and around the fullest part of the chest with arms down, keeping tape horizontal.

COLORS

Please note: PMS code information is shown only when an exact match is available.



Black
PMS BLACK
C



Grey Concrete
PMS COOL
GRAY 10C



Olive Drab
Green
PMS 7771C



True Navy
PMS 533C



True Red
PMS 200C



True Royal
PMS 7687C



White