

SPEC SHEET + MEASUREMENTS



OGIO® Women's Pulse Dolman Tee. LOE324

Product photo



STAY-COOL WICKING
ULTRABREATHABLE
FLATLOCK SEAMS FOR COMFORT
REFLECTIVE DETAILS

- 4-ounce, 100% poly with stay-cool wicking technology
- OGIO heat transfer label for tag-free comfort
- Reflective O heat transfer on left hem
- Reflective O vertical bar heat transfer on center back

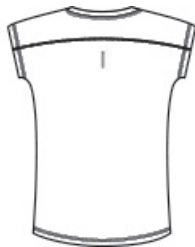
CARE INSTRUCTIONS

Machine wash cold with like colors. Do not use fabric softener.
Do not bleach. Tumble dry low. Cool iron. Do not dry clean.

Sketches



front



back

SPEC SHEET + MEASUREMENTS



OGIO® Women's Pulse Dolman Tee. LOE324

PRODUCT MEASUREMENTS

	XS	S	M	L	XL	2XL	3XL	4XL
Size	2	4/6	8/10	12/14	16/18	20/22	24/26	28/30
Body Length at Back	26	26 1/2	27	27 1/2	28	28 1/2	29	29 1/2
Bust	18	19	20	21 1/2	23	24 1/2	26 1/2	28 1/2

Body Length at Back: Measured from high point shoulder to finished hem at back.

Bust: Measured across the chest one inch below armhole when laid flat.

SIZE CHARTS

	XS	S	M	L	XL	2XL	3XL	4XL
Size	2	4/6	8/10	12/14	16/18	20/22	24/26	28/30
Bust	32-34	35-36	37-38	39-41	42-44	45-47	48-51	52-55

SPEC SHEET + MEASUREMENTS



OGIO® Women's Pulse Dolman Tee. LOE324

HOW TO MEASURE



BUST

Measure under the arm and around the fullest part of the bust with arms down, keeping tape horizontal.

COLORS

Please note: PMS code information is shown only when an exact match is available.



Blacktop
PMS BLACK
C



Electric Blue
PMS 2145C



Gear Grey
PMS 425C



Pink Rogue
PMS 710C