

## SPEC SHEET + MEASUREMENTS

**SPORT-TEK**

### Sport-Tek® PosiCharge® RacerMesh® Raglan Heather Block Polo. ST641

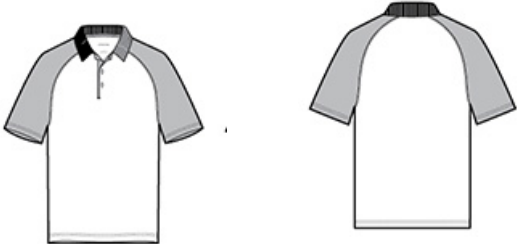
#### Product photo



This breathable, moisture-wicking polo combines solid and matching tonal heather RacerMesh fabrics for a truly modern team look.

- 3.8-ounce, 100% polyester flat back mesh with PosiCharge technology
- Solid flat knit collar
- Taped neck
- Tag-free label
- 3-button placket with dyed-to-match buttons
- Heather RacerMesh front and back body
- Solid RacerMesh sleeves and placket
- Raglan, open hem sleeves

#### Sketches



front

back

# SPEC SHEET + MEASUREMENTS

**SPORT-TEK**

Sport-Tek® PosiCharge® RacerMesh® Raglan Heather  
Block Polo. ST641

## PRODUCT MEASUREMENTS

	XS	S	M	L	XL	2XL	3XL	4XL
Body Length at Back	28	29	30	31	32	33	33 1/2	34
Chest	18 1/2	20	21 1/2	23	24 1/2	26	28	30
Sleeve Length	17 1/4	18	18 3/4	19 1/2	20 1/4	21	21 3/4	22 1/2

**Body Length at Back:** Measured from high point shoulder to finished hem at back.

**Chest:** Measured across the chest one inch below armhole when laid flat.

**Sleeve Length:** Start at center of neck and measure down shoulder, down sleeve to hem.

## SIZE CHARTS

	XS	S	M	L	XL	2XL	3XL	4XL
Chest	32-34	35-37	38-40	41-43	44-46	47-49	50-53	54-57

## HOW TO MEASURE



### CHEST

Measure under the arm and around the fullest part of the chest with arms down, keeping tape horizontal.

# SPEC SHEET + MEASUREMENTS



Sport-Tek® PosiCharge® RacerMesh® Raglan Heather  
Block Polo. ST641

## COLORS

---

Please note: PMS code information is shown only when an exact match is available.



Grey Heather/  
Black  
PMS BLACK  
C



True Navy  
Heather/ True  
Navy  
PMS 533C



True Royal  
Heather/ True  
Royal  
PMS 7687C