

SPEC SHEET + MEASUREMENTS

SPORT-TEK

Sport-Tek® Micropique Sport-Wick® Piped Polo. ST653

Product photo



Piping on the shoulders and back give this moisture-wicking, snag-resistant polo sporty contrast.

- 3.8-ounce, 100% polyester tricot
- Flat knit collar with tipping
- Taped neck
- Tag-free label
- 3-button placket with dyed-to-match buttons
- Set-in, open hem sleeves
- Piping at front and back shoulders and sleeves

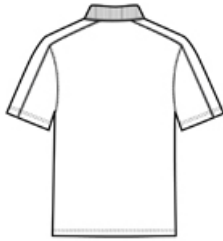
CARE INSTRUCTIONS

Machine wash cold with like colors, only non-chlorine bleach when needed. Do not use fabric softener. Tumble dry low, remove promptly. Cool iron if needed. Do not dry clean.

Sketches



front



back

SPEC SHEET + MEASUREMENTS



Sport-Tek® Micropique Sport-Wick® Piped Polo. ST653

PRODUCT MEASUREMENTS

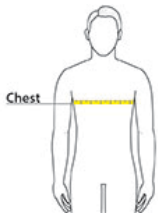
	XS	S	M	L	XL	2XL	3XL	4XL
Chest	18 3/4	20 1/4	21 3/4	23 1/4	24 3/4	26 1/4	28 1/4	30 1/4
Body Length at Back	28	29	30	31	32	33	33 1/2	34
Sleeve Length	17 3/4	18 1/2	19 1/4	20	20 3/4	21 1/2	22 1/4	23

- Chest:** Measured across the chest one inch below armhole when laid flat.
- Body Length at Back:** Measured from high point shoulder to finished hem at back.
- Sleeve Length:** Start at center of neck and measure down shoulder, down sleeve to hem.

SIZE CHARTS

	XS	S	M	L	XL	2XL	3XL	4XL
Chest	32-34	35-37	38-40	41-43	44-46	47-49	50-53	54-57

HOW TO MEASURE



CHEST

Measure under the arm and around the fullest part of the chest with arms down, keeping tape horizontal.





SPEC SHEET + MEASUREMENTS



Sport-Tek[®] Micropique Sport-Wick[®] Piped Polo. ST653

COLORS

Please note: PMS code information is shown only when an exact match is available.

					
Black/ Iron Grey PMS BLACK C	Black/ True Red PMS BLACK C	Black/ True Royal PMS BLACK C	Iron Grey/ White PMS COOL GREY 11 C	True Navy/ White PMS 533 C	White/ Iron Grey