

SPEC SHEET + MEASUREMENTS

SPORT-TEK

Sport-Tek® Tricot Sleeve Stripe Track Jacket. JST94

Product photo



The classic tricot track jacket with pieced stripes and rib knit details.

- 100% polyester tricot
- 100% polyester rib knit cuffs and hem
- Soft-brushed backing
- Cadet collar
- Tag-free label
- Reverse coil zipper
- Pieced stripe on shoulders and sleeves
- Front pockets

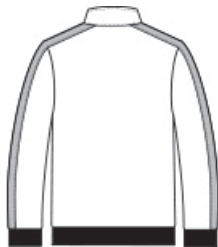
CARE INSTRUCTIONS

Machine wash cold. Gentle cycle with like colors. Use mild detergent, remove immediately. Do not allow to lay on itself when wet. Do not bleach. Tumble dry low. Cool iron, if needed.

Sketches



front



back

SPEC SHEET + MEASUREMENTS



Sport-Tek[®] Tricot Sleeve Stripe Track Jacket. JST94

PRODUCT MEASUREMENTS

	XS	S	M	L	XL	2XL	3XL	4XL
Body Length at Back	26	27	28	29	30	31	31 1/2	32
Chest	19 1/2	21	22 1/2	24	25 1/2	27	29	31
Sleeve Length from Center Back	34 3/4	35 1/2	36 1/4	37	37 3/4	38 1/2	39 1/4	40

Body Length at Back: Measured from high point shoulder to finished hem at back.

Chest: Measured across the chest one inch below armhole when laid flat.

Sleeve Length from Center Back: Measure from Center Back neck to shoulder point to sleeve hem.

SIZE CHARTS

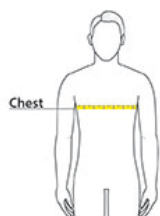
	XS	S	M	L	XL	2XL	3XL	4XL
Chest	32-34	35-37	38-40	41-43	44-46	47-49	50-53	54-57

SPEC SHEET + MEASUREMENTS



Sport-Tek® Tricot Sleeve Stripe Track Jacket. JST94

HOW TO MEASURE



CHEST

Measure under the arm and around the fullest part of the chest with arms down, keeping tape horizontal.

COLORS

Please note: PMS code information is shown only when an exact match is available.



Black/ Black
PMS BLACK
C



Black/ White
PMS BLACK
C



Graphite/
Black



True Navy/
White
PMS 533C



True Royal/
White
PMS 7687C