

SPEC SHEET + MEASUREMENTS

PORT AUTHORITY

Port Authority® Women's Collective Insulated Vest. L903

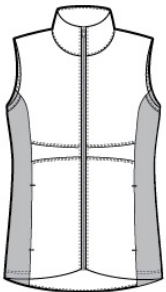
Product photo



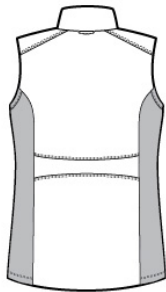
Insulation and stretch soft shell side panels make this vest a versatile, flattering and cozy cold-weather layer.

- 100% polyester woven shell
- 100% polyester printed lining with 100% polyfill insulation behind the outer quilted woven shell
- 100% polyester knit bonded to a water-resistant film insert and a 100% polyester microfleece lining at side panels and under arms
- Can be zipped in and secured by snap attachments inside an outer layer
- Slightly longer length
- Molded center front zipper
- Stretch side panels
- Open front pockets
- Front and back waist details
- Port Pocket™ for decoration access
- Tulip hem

Sketches



front



back

CARE INSTRUCTIONS

Machine wash cold with like colors; do not use fabric softener; tumble dry low; remove promptly; only non-chlorine bleach when needed; cool iron if necessary; do not dry clean.

SPEC SHEET + MEASUREMENTS

PORT AUTHORITY

Port Authority® Women's Collective Insulated Vest. L903

PRODUCT MEASUREMENTS

	XS	S	M	L	XL	XXL	3XL	4XL
Size	2	4/6	8/10	12/14	16/18	20/22	24/26	28/30
Body Length at Front	29 1/4	29 3/4	30 1/4	30 3/4	31 1/4	31 3/4	32 1/4	32 3/4
Bust	17 3/4	18 3/4	19 3/4	21 1/4	22 3/4	24 1/4	26 1/4	28 1/4

Body Length at Front: Measure from high point shoulder to lowest point of hem at front.

Bust: Measured across the chest one inch below armhole when laid flat.

SIZE CHARTS

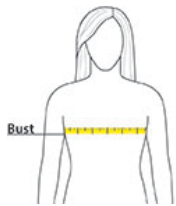
	XS	S	M	L	XL	XXL	3XL	4XL
Size	2	4/6	8/10	12/14	16/18	20/22	24/26	28/30
Chest	32-34	35-36	37-38	39-41	42-44	45-47	48-51	52-55

SPEC SHEET + MEASUREMENTS

PORT AUTHORITY

Port Authority® Women's Collective Insulated Vest. L903

HOW TO MEASURE



BUST

Measure under the arm and around the fullest part of the bust with arms down, keeping tape horizontal.

COLORS

Please note: PMS code information is shown only when an exact match is available.



Deep Black
PMS BLACK
C



Graphite
PMS 7540C



White