

SPEC SHEET + MEASUREMENTS

SPORT-TEK

Sport-Tek® Youth Waterproof Insulated Jacket. YST56

Product photo



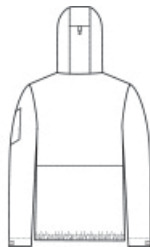
This fully seam-sealed, insulated jacket offers outstanding wind-resistant, water-repellent protection to help keep you dry in the stands or on the street.

- 100% polyester with waterproof face coating
- Fully seam-sealed
- Jersey-lined body and hood
- 2.4-ounce polyfill insulation in body
- 1.8-ounce polyfill insulation in hood and sleeves
- Polyester taffeta sleeves for easy on/off
- 5000MM fabric waterproof rating
- 3000G/M² fabric breathability rating
- Tag-free label
- Exposed molded zipper
- No drawcord at hood
- Left arm zippered pocket
- Adjustable self-fabric tab cuffs with hook and loop closures
- Front pouch pocket
- Decoration access pocket
- Elastic hem

Sketches



front



back

CARE INSTRUCTIONS

Machine Wash Cold With Like Colors Or Separate. Do Not Use Fabric Softener. Non-Chlorine Bleach When Needed. Tumble Dry Low. Do Not Iron.

SPEC SHEET + MEASUREMENTS



Sport-Tek® Youth Waterproof Insulated Jacket. YST56

PRODUCT MEASUREMENTS

	XS	S	M	L	XL
Size	4/5	6/8	10/12	14/16	18/20
Body Length at Back	19 1/2	21 1/2	23 1/2	25 1/2	27 1/2
Chest	16	17 1/2	19	20	21 1/2
Sleeve Length from Center Back	24	27	29 1/2	32	35

Body Length at Back: Measured from high point shoulder to finished hem at back.

Chest: Measured across the chest one inch below armhole when laid flat.

Sleeve Length from Center Back: Measure from Center Back neck to shoulder point to sleeve hem.

SIZE CHARTS

	XS	S	M	L	XL
Size	4/5	6/8	10/12	14/16	18/20
Chest	22-24	25-27	28-30	30-32	32-34

SPEC SHEET + MEASUREMENTS



Sport-Tek® Youth Waterproof Insulated Jacket. YST56

HOW TO MEASURE



CHEST

Measure under the arm and around the fullest part of the chest with arms down, keeping tape horizontal.

COLORS

Please note: PMS code information is shown only when an exact match is available.



Black
PMS BLACK
C



Forest Green
PMS 553C



Graphite
PMS 432C



True Navy
PMS 533C



True Royal
PMS 7687C