

# SPEC SHEET + MEASUREMENTS

**SPORT-TEK**

## Sport-Tek® Hooded Soft Shell Jacket. ST980

### Product photo



With sporty raglan sleeves and great water- and wind-resistance, this soft shell is made for you—regardless of the weather.

- 100% polyester knit shell with a durable water-repellent (DWR) coating bonded to a water-resistant film insert and a 100% polyester brushed tricot interior
- 5000MM fabric waterproof rating
- 5000G/M<sup>2</sup> fabric breathability rating
- Three-panel hood with drawcord and toggles
- Set-in sleeves
- Coated reverse coil center front zipper
- Front reverse coil zippered pockets
- Elastic binding at cuffs
- Open hem

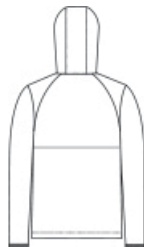
### CARE INSTRUCTIONS

Machine Wash Cold With Like Colors. Do Not Bleach. Do Not Use Fabric Softener. Tumble Dry Low. Do Not Iron.

### Sketches



front



back

# SPEC SHEET + MEASUREMENTS



## Sport-Tek® Hooded Soft Shell Jacket. ST980

### PRODUCT MEASUREMENTS

	XS	S	M	L	XL	2XL	3XL	4XL
Body Length at Back	27	28	29	30	31	32	32 1/2	33
Chest	19 1/2	21	22 1/2	24	25 1/2	27	29	31
Sleeve Length from Center Back	34 3/4	35 1/2	36 1/4	37	37 3/4	38 1/2	39 1/4	40

**Body Length at Back:** Measured from high point shoulder to finished hem at back.

**Chest:** Measured across the chest one inch below armhole when laid flat.

**Sleeve Length from Center Back:** Measure from Center Back neck to shoulder point to sleeve hem.

### SIZE CHARTS

	XS	S	M	L	XL	2XL	3XL	4XL
Chest	32-34	35-37	38-40	41-43	44-46	47-49	50-53	54-57

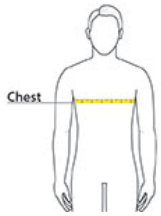
# SPEC SHEET + MEASUREMENTS



Sport-Tek® Hooded Soft Shell Jacket. ST980

## HOW TO MEASURE

---



### CHEST

Measure under the arm and around the fullest part of the chest with arms down, keeping tape horizontal.

## COLORS

---

Please note: PMS code information is shown only when an exact match is available.



Deep Black  
PMS BLACK  
C



Graphite  
PMS 432C



True Navy  
PMS 533C