

SPEC SHEET + MEASUREMENTS

PORT AUTHORITY

Port Authority® Grid Fleece Jacket. F239

Product photo



With solid and heather grid fleece options, this smooth-faced, brushed-back jacket makes a warm, sleek outer- or mid-layer. Stretch delivers easy movement and all-day comfort.

- 8-ounce, 94/6 polyester/spandex fleece
- Molded center front zipper
- Shoulder and sleeve piecing details
- Front reverse-coil zippered pockets
- Open cuffs and hem

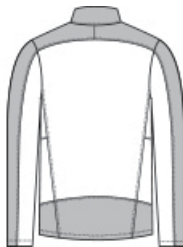
CARE INSTRUCTIONS

Machine wash cold. Only non-chlorine bleach when needed. Tumble dry low. Cool iron if necessary. Do not dry clean.

Sketches



front



back

SPEC SHEET + MEASUREMENTS

PORT AUTHORITY

Port Authority® Grid Fleece Jacket. F239

PRODUCT MEASUREMENTS

| | XS | S | M | L | XL | 2XL | 3XL | 4XL |
|--------------------------------|--------|--------|--------|--------|--------|--------|--------|--------|
| Body Length at Back | 28 | 29 | 30 | 31 | 32 | 33 | 33 1/2 | 34 |
| Chest | 18 1/4 | 19 3/4 | 21 1/4 | 22 3/4 | 24 1/4 | 25 3/4 | 27 3/4 | 29 3/4 |
| Sleeve Length from Center Back | 34 3/4 | 35 1/2 | 36 1/4 | 37 | 37 3/4 | 38 1/2 | 39 1/4 | 40 |

Body Length at Back: Measured from high point shoulder to finished hem at back.

Chest: Measured across the chest one inch below armhole when laid flat.

Sleeve Length from Center Back: Measure from Center Back neck to shoulder point to sleeve hem.

SIZE CHARTS

| | XS | S | M | L | XL | 2XL | 3XL | 4XL |
|-------|-------|-------|-------|-------|-------|-------|-------|-------|
| Chest | 32-34 | 35-37 | 38-40 | 41-43 | 44-46 | 47-49 | 50-53 | 54-57 |

SPEC SHEET + MEASUREMENTS

PORT AUTHORITY

Port Authority® Grid Fleece Jacket. F239

HOW TO MEASURE



CHEST

Measure under the arm and around the fullest part of the chest with arms down, keeping tape horizontal.

COLORS

Please note: PMS code information is shown only when an exact match is available.



Deep Black
PMS BLACK
C



Grey Smoke
Heather/ Grey
Smoke



River Blue
Navy
PMS 533C