

SPEC SHEET + MEASUREMENTS

PORT AUTHORITY

Port Authority® Mechanic Soft Shell Jacket. J417

Product photo



A classic style in an updated silhouette, this rugged stretch soft shell has a clean, sophisticated exterior. Wind-resistant, water-repellent performance means it's ideal for outdoor and casual workplaces.

- 100% polyester woven shell bonded to a water-resistant film insert and a 100% polyester microfleece lining
- 1000MM fabric waterproof rating
- 1000G/M² fabric breathability rating
- Water-resistant finish
- Metal center front zipper
- Open hand pockets
- Adjustable snap cuffs and hem
- Rental-friendly

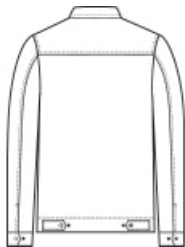
CARE INSTRUCTIONS

Machine Wash Cold With Like Colors. Only Non-Chlorine Bleach When Needed. Tumble Dry Medium. Cool Iron If Necessary.

Sketches



front



back

SPEC SHEET + MEASUREMENTS

PORT AUTHORITY

Port Authority® Mechanic Soft Shell Jacket. J417

PRODUCT MEASUREMENTS

	XS	S	M	L	XL	2XL	3XL	4XL
Body Length at Back	26	27	28	29	30	31	31 1/2	32
Chest	19 1/4	20 3/4	22 1/4	23 3/4	25 1/4	26 3/4	28 3/4	30 3/4
Sleeve Length from Center Back	34 3/4	35 1/2	36 1/4	37	37 3/4	38 1/2	39 1/4	40

Body Length at Back: Measured from high point shoulder to finished hem at back.

Chest: Measured across the chest one inch below armhole when laid flat.

Sleeve Length from Center Back: Measure from Center Back neck to shoulder point to sleeve hem.

SIZE CHARTS

	XS	S	M	L	XL	2XL	3XL	4XL
Chest	32-34	35-37	38-40	41-43	44-46	47-49	50-53	54-57

SPEC SHEET + MEASUREMENTS

PORT AUTHORITY

Port Authority® Mechanic Soft Shell Jacket. J417

HOW TO MEASURE



CHEST

Measure under the arm and around the fullest part of the chest with arms down, keeping tape horizontal.

COLORS

Please note: PMS code information is shown only when an exact match is available.



Black
PMS BLACK
C



Deep Smoke
PMS 425C



Dress Blue
Navy
PMS 533C