

SPEC SHEET + MEASUREMENTS

PORT AUTHORITY

Port Authority® Back-Block Soft Shell Jacket. J336

Product photo



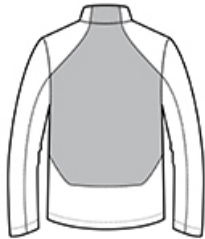
This sleek, tech-inspired soft shell resists wind, repels water and features an undeniably on-trend colorblock look.

- 100% polyester woven shell bonded to a water-resistant film insert and a 100% polyester microfleece lining
- 1000MM fabric waterproof rating
- 1000G/M² fabric breathability rating
- Zippered chest pocket
- Molded center zipper
- Hidden front zippered pouch pockets

Sketches



front



back

SPEC SHEET + MEASUREMENTS

PORT AUTHORITY

Port Authority® Back-Block Soft Shell Jacket. J336

PRODUCT MEASUREMENTS

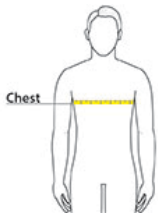
	XS	S	M	L	XL	2XL	3XL	4XL
Chest	19 1/2	21	22 1/2	24	25 1/2	27	29	31
Body Length at Back	27 1/4	28 1/4	29 1/4	30 1/4	31 1/4	32 1/4	32 3/4	33 1/4
Sleeve Length	34 3/4	35 1/2	36 1/4	37	37 3/4	38 1/2	39 1/4	40

- Chest:** Measured across the chest one inch below armhole when laid flat.
- Body Length at Back:** Measured from high point shoulder to finished hem at back.
- Sleeve Length:** Start at center of neck and measure down shoulder, down sleeve to hem.

SIZE CHARTS

	XS	S	M	L	XL	2XL	3XL	4XL
Chest	32-34	35-37	38-40	41-43	44-46	47-49	50-53	54-57

HOW TO MEASURE



CHEST

Measure under the arm and around the fullest part of the chest with arms down, keeping tape horizontal.




SPEC SHEET + MEASUREMENTS

PORT AUTHORITY

Port Authority® Back-Block Soft Shell Jacket. J336

COLORS

Please note: PMS code information is shown only when an exact match is available.

		
Battleship Grey/ Black PMS 7540 C	Black/ Black PMS BLACK C	Dress Blue Navy/ Battleship Grey PMS 533 C