

# SPEC SHEET + MEASUREMENTS



## CornerStone® Enhanced Visibility Fleece Pullover Hoodie. CSF01

### Product photo



Enhanced visibility joins moisture-wicking performance in this layerable worksite basic.

- 5.5-ounce, 100% polyester smooth-faced fleece
- Moisture-wicking
- Black bottom front and lower sleeves for a cleaner appearance
- Three-panel hood with drawcord adjustable closure
- Taped neck
- Front pouch pocket
- Rib knit cuffs and hem
- Non-ANSI

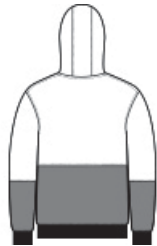
### CARE INSTRUCTIONS

Machine Wash Cold With Like Colors. Do Not Use Fabric Softener. Do Not Bleach. Tumble Dry Low. Cool Iron If Necessary.

### Sketches



front



back

# SPEC SHEET + MEASUREMENTS



## CornerStone® Enhanced Visibility Fleece Pullover Hoodie. CSF01

### PRODUCT MEASUREMENTS

|                                | XS     | S  | M      | L      | XL     | 2XL | 3XL    | 4XL    |
|--------------------------------|--------|----|--------|--------|--------|-----|--------|--------|
| Body Length at Back            | 26     | 27 | 28     | 29     | 30     | 31  | 31 1/2 | 32     |
| Chest                          | 20 1/2 | 22 | 23 1/2 | 25     | 26 1/2 | 28  | 30     | 32     |
| Sleeve Length from Center Back | 34 1/4 | 35 | 35 3/4 | 36 1/2 | 37 1/4 | 38  | 38 3/4 | 39 1/2 |

- Body Length at Back:** Measured from high point shoulder to finished hem at back.
- Chest:** Measured across the chest one inch below armhole when laid flat.
- Sleeve Length from Center Back:** Measure from Center Back neck to shoulder point to sleeve hem.

### SIZE CHARTS

|       | XS    | S     | M     | L     | XL    | 2XL   | 3XL   | 4XL   |
|-------|-------|-------|-------|-------|-------|-------|-------|-------|
| Chest | 32-34 | 35-37 | 38-40 | 41-43 | 44-46 | 47-49 | 50-53 | 54-57 |

# SPEC SHEET + MEASUREMENTS



CornerStone® Enhanced Visibility Fleece Pullover  
Hoodie. CSF01

## HOW TO MEASURE

---



### CHEST

Measure under the arm and  
around the fullest part of the chest  
with arms down, keeping tape  
horizontal.

## COLORS

---

Please note: PMS code information is shown only when an exact match is available.



Safety Orange   Safety Yellow