

# SPEC SHEET + MEASUREMENTS

PORT AUTHORITY

## Port Authority® Women's Essential Rain Jacket. L407

### Product photo



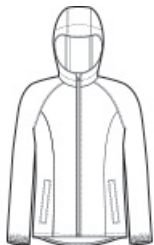
A year-round must-have, this fully seam-sealed 8K/5K waterproof, breathable 2.5-layer jacket has a DWR finish. It packs easily and gives great water-repellent, wind-resistant performance.

- 100% polyester shell bonded to a waterproof laminate film with DWR finish
- 8,000MM fabric waterproof rating
- 5,000G/M<sup>2</sup> fabric breathability rating
- Interior grid print
- Waterproof center front zipper
- Interior storm flap with chin guard
- Front zippered pockets
- Elastic cuffs

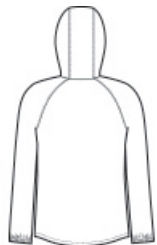
### CARE INSTRUCTIONS

Machine wash cold with like colors. Only non-chlorine bleach when needed. Tumble dry low. Cool iron if necessary. Do not Dry Clean.

### Sketches



front



back

# SPEC SHEET + MEASUREMENTS

PORT AUTHORITY

Port Authority® Women's Essential Rain Jacket. L407

## PRODUCT MEASUREMENTS

	XS	S	M	L	XL	XXL	3XL	4XL
Body Length at Back	27	27 1/2	28	28 1/2	29	29 1/2	30	30 1/2
Bust	19 1/4	20 1/4	21 1/4	22 3/4	24 1/4	25 3/4	27 3/4	29 3/4
Sleeve Length	32	32 1/2	33	33 5/8	34 1/4	34 7/8	35 1/4	35 5/8

**Body Length at Back:** Measured from high point shoulder to finished hem at back.

**Bust:** Measured across the chest one inch below armhole when laid flat.

**Sleeve Length:** Start at center of neck and measure down shoulder, down sleeve to hem.

## SIZE CHARTS

	XS	S	M	L	XL	XXL	3XL	4XL
Size	2	4/6	8/10	12/14	16/18	20/22	24/26	28/30
Bust	32-34	35-36	37-38	39-41	42-44	45-47	48-51	52-55

# SPEC SHEET + MEASUREMENTS

PORT AUTHORITY

Port Authority® Women's Essential Rain Jacket. L407

## HOW TO MEASURE

---



### BUST

Measure under the arm and around the fullest part of the bust with arms down, keeping tape horizontal.

## COLORS

---

Please note: PMS code information is shown only when an exact match is available.



Deep Black  
PMS BLACK  
C



Graphite  
PMS 432C



True Navy  
PMS 533C



True Royal  
PMS 7687C