

SPEC SHEET + MEASUREMENTS



Eddie Bauer® Women's Full-Zip Microfleece Jacket.

EB225

Product photo



Warmth and comfort—without bulk. This lightweight, versatile jacket is cozy on its own or layers easily under a jacket when it's cold.

- 5.3-ounce, 100% polyester microfleece with a low-pill finish
- Flatlock stitching throughout
- Princess seams
- Reverse coil zippers
- Front zippered pockets
- Open cuffs and hem
- Contrast embroidered Eddie Bauer logo on right hem

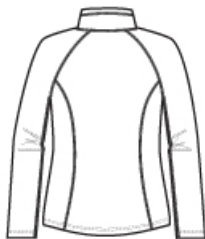
CARE INSTRUCTIONS

Machine wash cold. Only Non-chlorine bleach when needed. Tumble dry low. Cool iron on reverse side if necessary.

Sketches



front



back

SPEC SHEET + MEASUREMENTS



Eddie Bauer® Women's Full-Zip Microfleece Jacket. EB225

PRODUCT MEASUREMENTS

	XS	S	M	L	XL	2XL	3XL	4XL
Bust	17 1/2	18 1/2	19 1/2	21	22 1/2	24	26	28
Body Length at Front	26	26 1/2	27	28	29	30	30 1/2	31
Sleeve From Shoulder	31 1/4	32	32 3/4	33 1/2	34 1/4	35	35 1/2	36

Bust: Measured across the chest one inch below armhole when laid flat.

Body Length at Front: Measure from high point shoulder to lowest point of hem at front.

Sleeve From Shoulder: Measured from high point of shoulder to finished hem at sleeve.

SIZE CHARTS

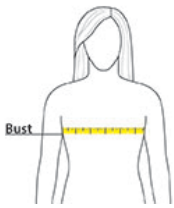
	XS	S	M	L	XL	2XL	3XL	4XL
Size	2	4/6	8/10	12/14	16/18	20/22	24/26	28/30
Bust	32-33	34-35	36-37	38-40	41-43	44-46	47-49	50-52

SPEC SHEET + MEASUREMENTS



Eddie Bauer® Women's Full-Zip Microfleece Jacket.
EB225

HOW TO MEASURE



BUST

Measure under the arm and around the fullest part of the bust with arms down, keeping tape horizontal.

COLORS

Please note: PMS code information is shown only when an exact match is available.



Black
PMS BLACK
C



Grey Steel
PMS 7540C



Navy
PMS 533C