

# SPEC SHEET + MEASUREMENTS

PORT AUTHORITY

## Port Authority® Active Soft Shell Jacket. J717

### Product photo



Our budget-friendly soft shell is made for dashing to the office or for activities like hiking or golfing. A wind- and water-resistant shell joins a breathable mesh liner—giving this jacket transitional, all-season versatility with plenty of stretch for movement.

- 100% polyester knit shell bonded to a water-resistant film insert and a 100% polyester mesh interior
- 3000MM fabric waterproof rating
- 3000G/M<sup>2</sup> fabric breathability rating
- Full-length interior storm flap with chin guard
- Reverse coil center front zipper
- Front zippered pockets
- Elastic binding at cuffs
- Open hem with adjustable locking drawcord

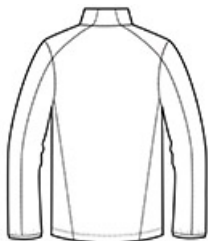
### CARE INSTRUCTIONS

Machine wash cold. Gentle cycle. Tumble dry low. Cool iron, if needed. Do not bleach. Do not dry clean.

### Sketches



front



back

# SPEC SHEET + MEASUREMENTS

PORT AUTHORITY

Port Authority® Active Soft Shell Jacket. J717

## PRODUCT MEASUREMENTS

	XS	S	M	L	XL	2XL	3XL	4XL
Chest	19 3/4	21 1/4	22 3/4	24 1/4	25 3/4	27 1/4	29 1/4	31 1/4
Body Length at Back	28	29	30	31	32	33	33 1/2	34
Sleeve Length from Center Back	35 1/4	36	36 3/4	37 1/2	38 1/4	39	39 3/4	40 1/2

- Chest:** Measured across the chest one inch below armhole when laid flat.
- Body Length at Back:** Measured from high point shoulder to finished hem at back.
- Sleeve Length from Center Back:** Measure from Center Back neck to shoulder point to sleeve hem.

## SIZE CHARTS

	XS	S	M	L	XL	2XL	3XL	4XL
Chest	32-34	35-37	38-40	41-43	44-46	47-49	50-53	54-57

# SPEC SHEET + MEASUREMENTS

PORT AUTHORITY

Port Authority® Active Soft Shell Jacket. J717

## HOW TO MEASURE



### CHEST

Measure under the arm and around the fullest part of the chest with arms down, keeping tape horizontal.

## COLORS

Please note: PMS code information is shown only when an exact match is available.

			
Deep Black PMS BLACK C	Dress Blue Navy PMS 533C	Grey Steel PMS 7540C	True Royal PMS 7687C