

# SPEC SHEET + MEASUREMENTS



## Eddie Bauer® Shirt Jac. EB502

### Product photo



Midweight jacket warmth meets collared shirt style in this shirt jac that blurs the line between the great outdoors and indoors.

- 100% polyester fabric
- 1.8-ounce, 100% polyester fill
- Water-resistant with a PU coating
- Snap-front closure and snap cuffs
- Drop-in left chest pocket
- Decoration access pocket
- Contrast heat transfer Eddie Bauer logo on the right hem

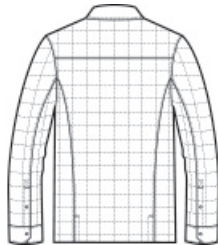
### CARE INSTRUCTIONS

Machine Wash Cold, Inside Out With Like Colors, Do Not Use Fabric Softener, Only Non-Chlorine Bleach When Needed, Tumble Dry Low, Do Not Iron, Do Not Dry Clean.

### Sketches



front



back

# SPEC SHEET + MEASUREMENTS



Eddie Bauer® Shirt Jac. EB502

## PRODUCT MEASUREMENTS

	XS	S	M	L	XL	2XL	3XL	4XL
Body Length at Back	27	28	29	30	31	32	32 1/2	33
Chest	20	21 1/2	23	24 1/2	26	27 1/2	29 1/2	31 1/2
Sleeve	35 1/4	36	36 3/4	37 1/2	38 1/4	39	39 3/4	40 1/2

**Body Length at Back:** Measured from high point shoulder to finished hem at back.

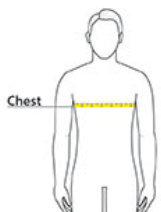
**Chest:** Measured across the chest one inch below armhole when laid flat.

**Sleeve:** Measure from Center Back neck to shoulder point to sleeve hem.

## SIZE CHARTS

	XS	S	M	L	XL	2XL	3XL	4XL
Chest	32-34	35-37	38-40	41-43	44-46	48-50	52-54	55-57

## HOW TO MEASURE



### CHEST

Measure under the arm and around the fullest part of the chest with arms down, keeping tape horizontal.

# SPEC SHEET + MEASUREMENTS



Eddie Bauer® Shirt Jac. EB502

## COLORS

---

Please note: PMS code information is shown only when an exact match is available.



Black  
PMS BLACK  
C



Charcoal Grey  
Heather  
PMS 7540C