

# SPEC SHEET + MEASUREMENTS



Eddie Bauer® Sport Hooded Full-Zip Fleece Jacket.

EB244

## Product photo



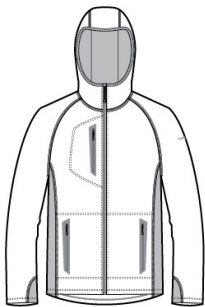
This sporty midweight jacket pairs smooth-faced fleece with stretch side panels for comfort during active adventures.

- 7.7-ounce, 100% polyester diamond doobby fleece
- 88/12 poly/spandex side panels
- Three-panel hood with contrast lining
- Reverse coil zippers
- Welded zippered contrast pockets
- Contrast heat transfer Eddie Bauer logo on left sleeve

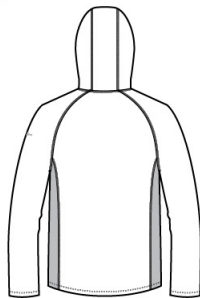
## CARE INSTRUCTIONS

Machine wash cold with like colors, only non-chlorine bleach when needed, tumble dry low, warm iron if necessary.

## Sketches



front



back

# SPEC SHEET + MEASUREMENTS



Eddie Bauer® Sport Hooded Full-Zip Fleece Jacket.  
EB244

## PRODUCT MEASUREMENTS

	XS	S	M	L	XL	2XL	3XL	4XL
Chest	18	19 1/2	21	22 1/2	24	25 1/2	27 1/2	29 1/2
Body Length at Front	28	29	30	31	32	33	33 1/2	34
Sleeve Length	34 1/4	35	35 3/4	36 1/2	37 1/4	38	38 3/4	39 1/2

**Chest:** Measured across the chest one inch below armhole when laid flat.

**Body Length at Front:** Measure from high point shoulder to lowest point of hem at front.

**Sleeve Length:** Start at center of neck and measure down shoulder, down sleeve to hem.

## SIZE CHARTS

	XS	S	M	L	XL	2XL	3XL	4XL
Chest	32-34	35-37	38-40	41-43	44-46	48-50	52-54	55-57

## HOW TO MEASURE



### CHEST

Measure under the arm and around the fullest part of the chest with arms down, keeping tape horizontal.

# SPEC SHEET + MEASUREMENTS



Eddie Bauer® Sport Hooded Full-Zip Fleece Jacket.

EB244

## COLORS

---

Please note: PMS code information is shown only when an exact match is available.



Black  
PMS BLACK  
C



Grey Cloud/  
Grey Steel/  
Expedition  
Blue  
PMS 2144C