

## SPEC SHEET + MEASUREMENTS



### Nike Sport Cover-Up. 400099

#### Product photo



An excellent choice for layering, this cover-up has a subtle texture and a soft hand.

- 9.75-ounce, 61/39 cotton/polyester
- Zip-through collar
- Open cuffs
- Open hem
- Contrast embroidered Swoosh logo on back neck

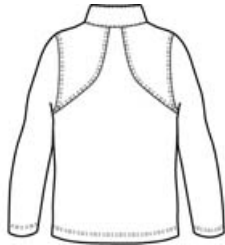
#### CARE INSTRUCTIONS

Machine wash cold. Wash inside out. Wash with like colors. Do not use softeners. Do not use bleach. Tumble dry low. Do not iron. Do not dry clean.

#### Sketches



front



back

# SPEC SHEET + MEASUREMENTS



Nike Sport Cover-Up. 400099

## PRODUCT MEASUREMENTS

	XS	S	M	L	XL	2XL	3XL	4XL
Chest	19 1/2	21	22 1/2	24	25 1/2	27	28 1/2	30
Sleeve Length	33 1/2	34 1/2	35 1/2	36 1/2	37 1/2	38 1/2	39 1/2	40 1/2
Body Length at Back	26 1/4	27 1/4	28 1/4	29 1/4	30 1/4	31 1/4	32 1/4	33 1/4

**Chest:** Measured across the chest one inch below armhole when laid flat.

**Sleeve Length:** Start at center of neck and measure down shoulder, down sleeve to hem.

**Body Length at Back:** Measured from high point shoulder to finished hem at back.

## SIZE CHARTS

	XS	S	M	L	XL	2XL	3XL	4XL
Chest	32-35	35 - 37 1/2	37 1/2 - 41	41 - 44	44 - 48 1/2	48 1/2 - 53 1/2	53 1/2 - 58	58 - 63

# SPEC SHEET + MEASUREMENTS



Nike Sport Cover-Up. 400099

## HOW TO MEASURE

---



### CHEST

Measure under the arm and around the fullest part of the chest with arms down, keeping tape horizontal.

## COLORS

---

Please note: PMS code information is shown only when an exact match is available.



Anthracite  
PMS 432C



Black  
PMS  
PROCESS  
BLACK C



Starlight  
PMS 2189C