

SPEC SHEET + MEASUREMENTS



Eddie Bauer® Women's Highpoint Fleece Jacket. EB241

Product photo



Made for movement, this sophisticated, stretch-infused twill fleece jacket has a smooth face and brushed fleece backing. Tonal welding details at the pockets and streamlined tailoring give it a refined look for indoor and outdoor uses.

- 8.3-ounce, 94/6 poly/spandex fleece
- Anti-pill finish
- Beautifully shaped, feminine collar
- Molded reverse coil zippers
- Front zippered pockets
- Contrast heat transfer Eddie Bauer logo on right hem

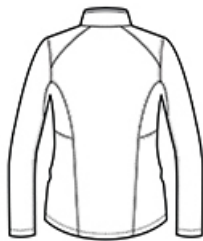
CARE INSTRUCTIONS

Machine wash cold. Do not bleach. Tumble dry low. Remove promptly. Cool iron if needed. Do not use softeners

Sketches



front



back

SPEC SHEET + MEASUREMENTS



Eddie Bauer® Women's Highpoint Fleece Jacket. EB241

PRODUCT MEASUREMENTS

	XS	S	M	L	XL	2XL	3XL	4XL
Size	2	4/6	8/10	12/14	16/18	20/22	24/26	28/30
Bust	17 3/8	18 3/8	19 3/8	20 7/8	22 3/8	23 7/8	25 7/8	27 7/8
Body Length at Back	27 5/8	28 1/4	28 7/8	29 1/2	30 1/8	30 3/4	31 3/8	32
Sleeve Length	32	32 1/2	33	33 5/8	34 1/4	34 7/8	35 1/4	35 5/8

Bust: Measured across the chest one inch below armhole when laid flat.

Body Length at Back: Measured from high point shoulder to finished hem at back.

Sleeve Length: Start at center of neck and measure down shoulder, down sleeve to hem.

SIZE CHARTS

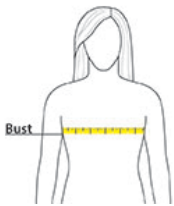
	XS	S	M	L	XL	2XL	3XL	4XL
Size	2	4/6	8/10	12/14	16/18	20/22	24/26	28/30
Bust	32-33	34-35	36-37	38-40	41-43	44-46	47-49	50-52

SPEC SHEET + MEASUREMENTS



Eddie Bauer® Women's Highpoint Fleece Jacket. EB241

HOW TO MEASURE



BUST

Measure under the arm and around the fullest part of the bust with arms down, keeping tape horizontal.

COLORS

Please note: PMS code information is shown only when an exact match is available.



Black
PMS BLACK
C



Metal Grey
PMS COOL
GREY 9 C