

## SPEC SHEET + MEASUREMENTS



### Eddie Bauer® Packable Wind Jacket. EB500

#### Product photo



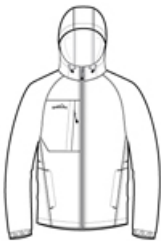
Wind was the inspiration for this compact layer. Plus, it packs down into its own logo-adorned pocket, making it easy to carry wherever you go.

- 100% nylon
- Hood with locking drawcords for adjustability
- Contrast reverse coil zipper
- Underarm vents
- Packs into its own zippered chest pocket
- Front unzipped pockets
- Elastic cuffs and an open hem
- Contrast Eddie Bauer logo on right chest

#### CARE INSTRUCTIONS

Secure all garment before laundering Machine wash warm delicate separately Use mild detergent rinse thoroughly Do not bleach Tumble dry low or for best result line dry Do not iron. Do not dry clean

#### Sketches



front



back

# SPEC SHEET + MEASUREMENTS



Eddie Bauer® Packable Wind Jacket. EB500

## PRODUCT MEASUREMENTS

	XS	S	M	L	XL	2XL	3XL	4XL
Chest	21 1/2	23	24 1/2	26	27 1/2	29	31	33
Sleeve Length	34 3/4	35 1/2	36 1/4	37	37 3/4	38 1/2	39 1/4	40
Body Length at Back	28	28 1/2	29	29 1/2	30 1/2	31 1/2	32	32 1/2

**Chest:** Measured across the chest one inch below armhole when laid flat.

**Sleeve Length:** Start at center of neck and measure down shoulder, down sleeve to hem.

**Body Length at Back:** Measured from high point shoulder to finished hem at back.

## SIZE CHARTS

	XS	S	M	L	XL	2XL	3XL	4XL
Chest	32-34	35-37	38-40	41-43	44-46	48-50	52-54	55-57

## HOW TO MEASURE



### CHEST

Measure under the arm and around the fullest part of the chest with arms down, keeping tape horizontal.

# SPEC SHEET + MEASUREMENTS



Eddie Bauer® Packable Wind Jacket. EB500

## COLORS

---

Please note: PMS code information is shown only when an exact match is available.



Adriatic Blue  
PMS 4161C



Black  
PMS BLACK  
C



Grey Steel  
PMS 7540C