

## SPEC SHEET + MEASUREMENTS



The North Face® ThermoBall™ Trekker Jacket.

NF0A3LH2

### Product photo



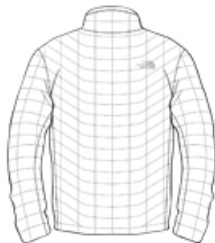
Designed with baffles contoured to fit your body, this streamlined jacket offers lightweight, highly compressible ThermoBall™ synthetic insulation made with 100% recycled polyester polyfill. Excellent at retaining loft and warmth even when wet, the ThermoBall™ Trekker Jacket will keep you warmer regardless of the conditions.

- 15D 33 g/m2 100% nylon with non-PFC durable water-repellent (DWR) finish
- 15D 33 g/m2 100% recycled nylon with non-PFC durable water-repellent (DWR) finish (TNF Matte Black)
- 11.5 g/ft2 ThermoBall™ synthetic insulation made with 100% recycled polyester polyfill
- Interior left chest zippered pocket
- Interior elastic cuffs
- Secure-zip hand pockets
- Stows in left hand pocket
- Contrast embroidered The North Face logo on left chest and right back shoulder
- Hem cinch-cord

### Sketches



front



back

### BENEFITS

**DURABLE WATER-REPELLENT:** DWR is applied to the face of the fabric to provide the first line of defense against wet weather.

**INSULATED:** Insulation traps hot air for reduced heat loss and increased warmth.

**PACKABLE/STOWABLE:** Highly compressible layer for emergency use or travel.

**SYNTHETIC:** Designed to replicate the qualities of down, but retain them even when wet.

### CARE INSTRUCTIONS

## SPEC SHEET + MEASUREMENTS



The North Face® ThermoBall™ Trekker Jacket.

NF0A3LH2

Do not dry clean. Hand or machine wash separately on delicate cycle in warm water. Use mild detergent. Rinse well. Secure all hook and loop closures during wash. Tumble dry at low heat. Do not bleach. Do not iron.

### PRODUCT MEASUREMENTS

	S	M	L	XL	2XL	3XL
Chest	21	22 1/2	24	26	28	30
Body Length at Back	27 7/8	28 1/2	29 3/8	30 3/8	31 3/8	32 3/8
Sleeve Length	35 1/2	36	36 3/4	37 1/2	38 1/4	39

**Chest:** Measured across the chest one inch below armhole when laid flat.

**Body Length at Back:** Measured from high point shoulder to finished hem at back.

**Sleeve Length:** Start at center of neck and measure down shoulder, down sleeve to hem.

### SIZE CHARTS

	S	M	L	XL	2XL	3XL
Chest	36-38	39-41	42-44	45-48	49-52	53-56

## SPEC SHEET + MEASUREMENTS



The North Face® ThermoBall™ Trekker Jacket.  
NF0A3LH2

### HOW TO MEASURE

---



#### CHEST

Measure under the arm and around the fullest part of the chest with arms down, keeping tape horizontal.

### COLORS

---

Please note: PMS code information is shown only when an exact match is available.



Mid Grey  
PMS COOL  
GREY 8 C



TNF Black  
PMS BLACK  
C



TNF Matte  
Black  
PMS BLACK  
C