

SPEC SHEET + MEASUREMENTS

SPORT-TEK

Sport-Tek® PosiCharge® Competitor™ Hooded Pullover. ST358

Product photo



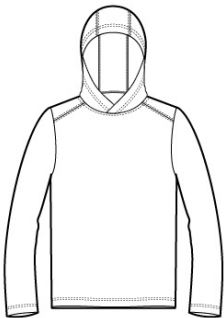
This lightweight hooded pullover locks in color and wicks moisture. It's versatile enough for year-round wear.

- 3.8-ounce, 100% polyester interlock with PosiCharge technology
- Removable tag for comfort and relabeling
- Three-panel hood
- Set-in sleeves
- Open cuffs and hem

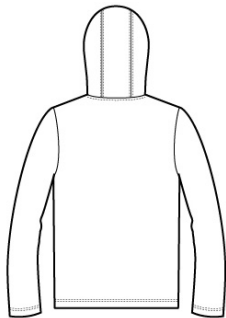
CARE INSTRUCTIONS

Machine wash cold with like colors. Only non-chlorine bleach. When needed tumble dry low, remove promptly. Cool iron if needed. Do not use softener. Do not dry clean.

Sketches



front



back

SPEC SHEET + MEASUREMENTS

SPORT-TEK

Sport-Tek® PosiCharge® Competitor™ Hooded Pullover. ST358

PRODUCT MEASUREMENTS

	XS	S	M	L	XL	2XL	3XL	4XL
Body Length at Front	27	28	29	30	31	32	32 1/2	33
Chest	18 1/2	20	21 1/2	23	24 1/2	26	28	30
Sleeve Length	34 1/4	35	35 3/4	36 1/2	37 1/4	38	38 3/4	39 1/2

Body Length at Front: Measure from high point shoulder to lowest point of hem at front.

Chest: Measured across the chest one inch below armhole when laid flat.

Sleeve Length: Start at center of neck and measure down shoulder, down sleeve to hem.

SIZE CHARTS

	XS	S	M	L	XL	2XL	3XL	4XL
Chest	32-34	35-37	38-40	41-43	44-46	47-49	50-53	54-57

HOW TO MEASURE



CHEST

Measure under the arm and around the fullest part of the chest with arms down, keeping tape horizontal.




SPEC SHEET + MEASUREMENTS



Sport-Tek® PosiCharge® Competitor™ Hooded Pullover.
ST358

COLORS

Please note: PMS code information is shown only when an exact match is available.

					
Black PMS BLACK C	Iron Grey PMS 7540C	Silver PMS 429C	True Navy PMS 533C	True Red PMS 200C	True Royal PMS 7687C