

SPEC SHEET + MEASUREMENTS

PORT AUTHORITY

Port Authority® Silk Touch™ Performance 1/4-Zip. K584

Product photo



Designed to meet the needs of active uniforming, our easy care, moisture-wicking, snag-resistant 1/4-zips have the Silk Touch hand you've loved for years—plus PosiCharge® technology for exceptional color-locking performance.

- 4-ounce, 100% polyester double knit with PosiCharge technology
- Cadet collar
- Contrast inner collar
- Contrast collar binding
- Tag-free label
- Binding at cuffs

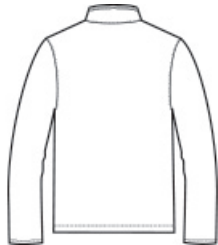
CARE INSTRUCTIONS

Machine wash cold With like colors Do not bleach Do not use fabric softener Tumble dry low Remove promptly Cool iron if needed Do not dry clean

Sketches



front



back

SPEC SHEET + MEASUREMENTS

PORT AUTHORITY

Port Authority® Silk Touch™ Performance 1/4-Zip. K584

PRODUCT MEASUREMENTS

	XS	S	M	L	XL	2XL	3XL	4XL
Body Length at Back	27 1/2	28 1/2	29 1/2	30 1/2	31 1/2	32 1/2	33	33 1/2
Chest	18 1/2	20	21 1/2	23	24 1/2	26	28	30
Sleeve Length	34 1/2	35 1/4	36	36 3/4	37 1/2	38 1/4	39	39 3/4

Body Length at Back: Measured from high point shoulder to finished hem at back.

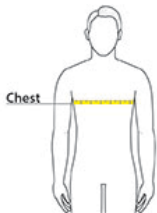
Chest: Measured across the chest one inch below armhole when laid flat.

Sleeve Length: Start at center of neck and measure down shoulder, down sleeve to hem.

SIZE CHARTS

	XS	S	M	L	XL	2XL	3XL	4XL
Chest	32-34	35-37	38-40	41-43	44-46	47-49	50-53	54-57

HOW TO MEASURE



CHEST

Measure under the arm and around the fullest part of the chest with arms down, keeping tape horizontal.


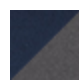



SPEC SHEET + MEASUREMENTS

PORT AUTHORITY

Port Authority® Silk Touch™ Performance 1/4-Zip. K584

COLORS

Please note: PMS code information is shown only when an exact match is available.

				
Black/ Steel Grey PMS BLACK C	Navy/ Steel Grey PMS 533C	Red/ Black PMS 187C	Royal/ Steel Grey PMS 3597C	Steel Grey/ Black PMS 7540C