

## SPEC SHEET + MEASUREMENTS

### District® Lightweight Fleece 1/4-Zip. DM392

#### Product photo



Made to layer, this soft 1/4-zip is the best for casual comfort.

- 6.5-ounce (220 GSM)
- 55/45 combed ring spun cotton/recycled polyester fleece
- Tear-away label
- Coverstitch details
- Back neck tape
- Metal zipper
- 2x2 rib knit cuffs and hem

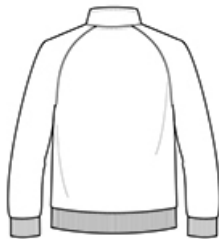
#### CARE INSTRUCTIONS

Machine wash cold. With like colors. Non-chlorine bleach if needed. Tumble dry low. Do not use fabric softener. Do not dry clean. Cool iron if needed.

#### Sketches



front



back

# SPEC SHEET + MEASUREMENTS

## District® Lightweight Fleece 1/4-Zip. DM392

### PRODUCT MEASUREMENTS

	XS	S	M	L	XL	2XL	3XL	4XL
Chest	19 1/2	20 1/2	21 1/2	23	24 1/2	26	28	30
Body Length at Back	26 1/2	27 1/2	28 1/2	29 1/2	30 1/2	31 1/2	32	32 1/2
Sleeve Length	34 1/4	35	35 3/4	36 1/2	37 1/4	38	38 3/4	39 1/2

**Chest:** Measured across the chest one inch below armhole when laid flat.

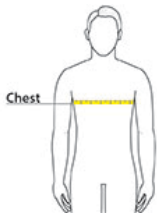
**Body Length at Back:** Measured from high point shoulder to finished hem at back.

**Sleeve Length:** Start at center of neck and measure down shoulder, down sleeve to hem.

### SIZE CHARTS

	XS	S	M	L	XL	2XL	3XL	4XL
Chest	34-35	36-37	38-40	41-43	44-46	47-49	50-52	53-55

### HOW TO MEASURE



#### CHEST

Measure under the arm and around the fullest part of the chest with arms down, keeping tape horizontal.

# SPEC SHEET + MEASUREMENTS

District® Lightweight Fleece 1/4-Zip. DM392

## COLORS

---

Please note: PMS code information is shown only when an exact match is available.



Heathered  
Black  
PMS 426C



Heathered  
Deep Royal  
PMS 7687C



Heathered  
Grey



Heathered  
Navy  
PMS 2379C