

SPEC SHEET + MEASUREMENTS



District® Perfect Tri® French Terry Hoodie. DT355

Product photo



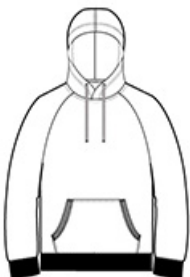
Combining casual ease with the softness of our perfect tri blend.

- 7.1-ounce (240 GSM)
- 61/31/8 ring spun cotton/polyester/rayon French terry
- Tear-away label
- Unlined hood
- Natural drawcords and back neck tape
- Front pouch pocket
- 1x1 rib knit cuffs and hem

CARE INSTRUCTIONS

Machine wash cold with like colors, only non-chlorine bleach when needed, tumble dry low, warm iron if necessary.

Sketches



front



back

SPEC SHEET + MEASUREMENTS



District® Perfect Tri® French Terry Hoodie. DT355

PRODUCT MEASUREMENTS

	XS	S	M	L	XL	2XL	3XL	4XL
Body Length at Front	26 1/2	27 1/2	28 1/2	29 1/2	30 1/2	31 1/2	32	32 1/2
Chest	18 1/2	20	21 1/2	23	24 1/2	26	28	30
Sleeve Length	34 1/4	35	35 3/4	36 1/2	37 1/4	38	38 3/4	39 1/2

Body Length at Front: Measure from high point shoulder to lowest point of hem at front.

Chest: Measured across the chest one inch below armhole when laid flat.

Sleeve Length: Start at center of neck and measure down shoulder, down sleeve to hem.

SIZE CHARTS

	XS	S	M	L	XL	2XL	3XL	4XL
Chest	32-34	35-37	38-40	41-43	44-46	47-49	50-53	54-57

HOW TO MEASURE



CHEST

Measure under the arm and around the fullest part of the chest with arms down, keeping tape horizontal.

SPEC SHEET + MEASUREMENTS



District® Perfect Tri® French Terry Hoodie. DT355

COLORS

Please note: PMS code information is shown only when an exact match is available.



Black
PMS BLACK
C



Grey Frost
PMS COOL
GREY 11C



New Navy
PMS 533C