

SPEC SHEET + MEASUREMENTS

SPORT-TEK

Sport-Tek® Women's PosiCharge® Tri-Blend Wicking Fleece Hooded Pullover. LST296

Product photo



Amazing tri-blend softness, color-locking PosiCharge technology and moisture-wicking performance make this hooded pullover ideal for athletes and fans.

- 7.1-ounce, 75/13/12 poly/cotton/rayon with PosiCharge technology
- Tear-away removable label
- Three-panel hood
- Hood and neck taping
- Front princess seams
- Thumbholes to keep hands warm
- Self-fabric cuffs and hem
- Front pouch pocket
- Drop tail hem

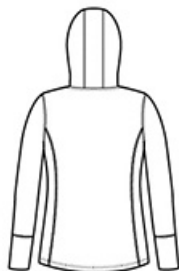
CARE INSTRUCTIONS

Machine wash cold with like colors: only non-chlorine bleached when needed, tumble dry low, do not use fabric softener, remove promptly, cool iron if necessary, do not dry clean.

Sketches



front



back

SPEC SHEET + MEASUREMENTS



Sport-Tek® Women's PosiCharge® Tri-Blend Wicking Fleece Hooded Pullover. LST296

PRODUCT MEASUREMENTS

	XS	S	M	L	XL	XXL	3XL	4XL
Size	2	4/6	8/10	12/14	16/18	20/22	24/26	28/30
Body Length at Back	27 3/4	28 1/4	28 3/4	29 1/4	29 3/4	30 1/4	30 3/4	31 1/4
Bust	18 1/4	19 1/4	20 1/4	21 3/4	23 1/4	24 3/4	26 3/4	28 3/4
Sleeve Length	33	33 1/2	34	34 5/8	35 1/4	35 7/8	36 1/4	36 5/8

Body Length at Back: Measured from high point shoulder to finished hem at back.

Bust: Measured across the chest one inch below armhole when laid flat.

Sleeve Length: Start at center of neck and measure down shoulder, down sleeve to hem.

SIZE CHARTS

	XS	S	M	L	XL	XXL	3XL	4XL
Size	2	4/6	8/10	12/14	16/18	20/22	24/26	28/30
Bust	32-34	35-36	37-38	39-41	42-44	45-47	48-51	52-55

SPEC SHEET + MEASUREMENTS



Sport-Tek® Women's PosiCharge® Tri-Blend Wicking
Fleece Hooded Pullover. LST296

HOW TO MEASURE



BUST

Measure under the arm and
around the fullest part of the bust
with arms down, keeping tape
horizontal.

COLORS

Please note: PMS code information is shown only when an exact match is available.



Black Triad
Solid
PMS BLACK
C



Dark Grey
Heather
PMS COOL
GRAY 11C