

## SPEC SHEET + MEASUREMENTS

**SPORT-TEK**

### Sport-Tek® Sport-Wick® Varsity Fleece Full-Zip Hooded Jacket. ST236

#### Product photo



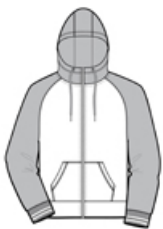
With colorblock raglan sleeves, this varsity-inspired jacket wicks moisture and fights static.

- 5.5-ounce, 100% polyester
- Tag-free label
- Three-panel hood
- Self-fabric hood lining
- Taped neck
- Dyed-to-match drawcords with metal tips
- Raglan sleeves
- 2x2 rib knit cuffs with yarn dye stripe
- Front pouch pockets
- Self-fabric hem

#### CARE INSTRUCTIONS

Machine wash cold. Do not bleach. Tumble dry low. Cool Iron if necessary. Do not use softener

#### Sketches



front



back

# SPEC SHEET + MEASUREMENTS



## Sport-Tek® Sport-Wick® Varsity Fleece Full-Zip Hooded Jacket. ST236

### PRODUCT MEASUREMENTS

	XS	S	M	L	XL	2XL	3XL	4XL
Chest	20	21 1/2	23	24 1/2	26	27 1/2	29 1/2	31 1/2
Body Length at Back	27	28	29	30	31	32	32 1/2	33
Sleeve Length	34 3/4	35 1/2	36 1/4	37	37 3/4	38 1/2	39 1/4	40

**Chest:** Measured across the chest one inch below armhole when laid flat.

**Body Length at Back:** Measured from high point shoulder to finished hem at back.

**Sleeve Length:** Start at center of neck and measure down shoulder, down sleeve to hem.

### SIZE CHARTS

	XS	S	M	L	XL	2XL	3XL	4XL
Chest	32-34	35-37	38-40	41-43	44-46	47-49	50-53	54-57

### HOW TO MEASURE



#### CHEST

Measure under the arm and around the fullest part of the chest with arms down, keeping tape horizontal.

# SPEC SHEET + MEASUREMENTS



Sport-Tek® Sport-Wick® Varsity Fleece Full-Zip Hooded Jacket. ST236

## COLORS

---

Please note: PMS code information is shown only when an exact match is available.



Black/ Dark  
Smoke Grey  
PMS 425 C



Black/ Deep  
Red  
PMS 201 C



Black/ True  
Royal  
PMS 7687 C



Dark Smoke  
Grey/ Navy  
PMS 533 C