

SPEC SHEET + MEASUREMENTS

SPORT-TEK

Sport-Tek® Sport-Wick® Stretch Contrast 1/4-Zip Pullover. ST854

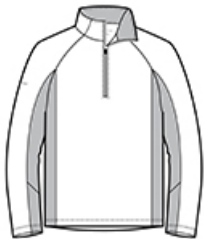
Product photo



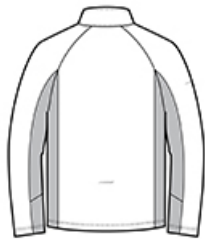
By mixing heather with a solid color and adding reflective hits, this moisture-wicking pullover has a technical look plus plenty of stretch for easy movement.

- 6.8-ounce, 90/10 poly/spandex jersey
- Soft-brushed backing
- Tag-free label
- Reflective details on right sleeve and lower back
- Cadet collar
- Reverse coil zipper
- Raglan sleeves
- Open cuffs and hem

Sketches



front



back

SPEC SHEET + MEASUREMENTS



Sport-Tek® Sport-Wick® Stretch Contrast 1/4-Zip Pullover. ST854

PRODUCT MEASUREMENTS

| | XS | S | M | L | XL | 2XL | 3XL | 4XL |
|---------------------|--------|--------|--------|--------|--------|--------|--------|--------|
| Chest | 20 | 21 1/2 | 23 | 24 1/2 | 26 | 27 1/2 | 29 1/2 | 31 1/2 |
| Body Length at Back | 27 1/2 | 28 1/2 | 29 1/2 | 30 1/2 | 31 1/2 | 32 1/2 | 33 | 33 1/2 |
| Sleeve Length | 33 3/4 | 34 1/2 | 35 1/4 | 36 | 36 3/4 | 37 1/2 | 38 1/4 | 39 |

Chest: Measured across the chest one inch below armhole when laid flat.

Body Length at Back: Measured from high point shoulder to finished hem at back.

Sleeve Length: Start at center of neck and measure down shoulder, down sleeve to hem.

SIZE CHARTS

| | XS | S | M | L | XL | 2XL | 3XL | 4XL |
|-------|-------|-------|-------|-------|-------|-------|-------|-------|
| Chest | 32-34 | 35-37 | 38-40 | 41-43 | 44-46 | 47-49 | 50-53 | 54-57 |

HOW TO MEASURE



CHEST

Measure under the arm and around the fullest part of the chest with arms down, keeping tape horizontal.

SPEC SHEET + MEASUREMENTS



Sport-Tek® Sport-Wick® Stretch Contrast 1/4-Zip Pullover.
ST854

COLORS

Please note: PMS code information is shown only when an exact match is available.



Black/
Charcoal Grey
Heather
PMS 426 C



Charcoal
Grey/
Charcoal Grey
Heather
PMS 7540 C



True Navy/
True Navy
Heather
PMS 533 C