

## SPEC SHEET + MEASUREMENTS



### New Era® French Terry Pullover Hoodie. NEA500

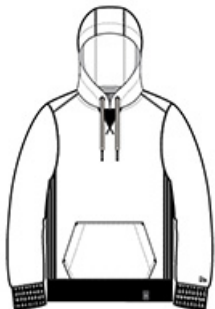
#### Product photo



This super-soft hoodie is great for lounging but can also amp up your street style.

- 9.4-ounce, 52/48 cotton/poly sueded French terry
- Coverstitched seams
- Lined and twill-taped 3-panel hood
- Woven New Era patch label
- Black nickel grommets
- Wide drawcords with New Era metal tips
- Rib knit V inset at neck
- Rolled-forward shoulders
- Rib knit side panels
- Front pouch pocket
- Embroidered New Era flag logo on left sleeve
- Rib knit cuffs and hem
- Woven New Era badge at hem

#### Sketches



front



back

#### CARE INSTRUCTIONS

Machine wash cold with like colors. Do not use fabric softener, tumble dry low, remove promptly, only non-chlorine bleach when needed, cool iron if necessary, do not dry clean.

# SPEC SHEET + MEASUREMENTS



## New Era® French Terry Pullover Hoodie. NEA500

### PRODUCT MEASUREMENTS

	XS	S	M	L	XL	2XL	3XL	4XL
Body Length at Back	28	29	30	31	32	33	33 3/4	34 1/2
Chest	18 1/2	20	21 1/2	23	25	27	29 1/2	32 1/2
Sleeve Length	35 1/4	36	36 3/4	37 1/2	38 1/4	39	39 3/4	40 1/2

**Body Length at Back:** Measured from high point shoulder to finished hem at back.

**Chest:** Measured across the chest one inch below armhole when laid flat.

**Sleeve Length:** Start at center of neck and measure down shoulder, down sleeve to hem.

### SIZE CHARTS

	XS	S	M	L	XL	2XL	3XL	4XL
Chest	32-34	35-37	38-40	41-43	44-46	47-49	50-53	54-57

### HOW TO MEASURE



#### CHEST

Measure under the arm and around the fullest part of the chest with arms down, keeping tape horizontal.

# SPEC SHEET + MEASUREMENTS



New Era® French Terry Pullover Hoodie. NEA500

## COLORS

Please note: PMS code information is shown only when an exact match is available.



Black  
PMS BLACK  
C



Black Twist  
PMS BLACK  
C



Dark Royal  
Twist  
PMS 2768C



Graphite  
PMS 7540C



Light Graphite  
Twist  
PMS COOL  
GRAY 10C



True Navy  
PMS 533C