

SPEC SHEET + MEASUREMENTS



New Era® French Terry Full-Zip Hoodie. NEA502

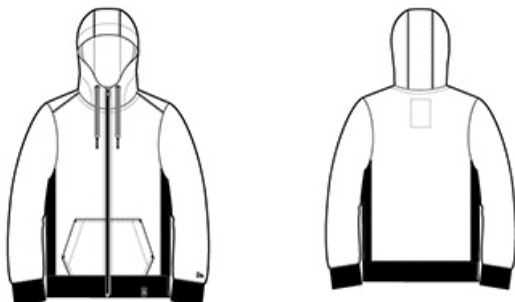
Product photo



This hoodie fuses the soft feel of an old-school essential with modern must-have details.

- 9.4-ounce, 52/48 cotton/poly sueded French terry
- Coverstitched seams
- Lined and twill-taped 3-panel hood
- Zip-through collar
- Woven New Era patch label
- Exposed black nickel zipper and grommets
- Wide drawcords with New Era metal tips
- Rolled-forward shoulders
- Rib knit side panels
- Front pouch pockets
- Embroidered New Era flag logo on left sleeve
- Rib knit cuffs and hem
- Woven New Era badge at hem

Sketches



front

back

CARE INSTRUCTIONS

Machine wash cold with like colors. Do not use fabric softener, tumble dry low, remove promptly, only non-chlorine bleach when needed, cool iron if necessary, do not dry clean.

SPEC SHEET + MEASUREMENTS



New Era® French Terry Full-Zip Hoodie. NEA502

PRODUCT MEASUREMENTS

	XS	S	M	L	XL	2XL	3XL	4XL
Body Length at Back	27	28	29	30	31	32	32 3/4	33 1/2
Chest	18 1/4	19 3/4	21 1/4	22 3/4	24 3/4	26 3/4	29 1/4	32 1/4
Sleeve Length	35 1/4	36	36 3/4	37 1/2	38 1/4	39	39 3/4	40 1/2

Body Length at Back: Measured from high point shoulder to finished hem at back.

Chest: Measured across the chest one inch below armhole when laid flat.

Sleeve Length: Start at center of neck and measure down shoulder, down sleeve to hem.

SIZE CHARTS

	XS	S	M	L	XL	2XL	3XL	4XL
Chest	32-34	35-37	38-40	41-43	44-46	47-49	50-53	54-57

HOW TO MEASURE



CHEST

Measure under the arm and around the fullest part of the chest with arms down, keeping tape horizontal.

SPEC SHEET + MEASUREMENTS



New Era® French Terry Full-Zip Hoodie. NEA502

COLORS

Please note: PMS code information is shown only when an exact match is available.



Black
PMS BLACK
C



Black Twist
PMS BLACK
C



Dark Royal
Twist
PMS 2768C



Light Graphite
Twist
PMS COOL
GRAY 10C



True Navy
Twist
PMS 533C