

# SPEC SHEET + MEASUREMENTS

**SPORT-TEK**

## Sport-Tek® Triumph 1/4-Zip Pullover. ST281

### Product photo



This double knit, cotton-rich pullover is a triumph with integrated pockets and rubberized zippers for a modern look and feel.

- 7.1-ounce, 71/29 cotton/poly double-knit fleece
- Cadet collar
- Tag-free label
- Rubberized center front zipper
- Front pouch pocket with integrated rubberized zippered pocket

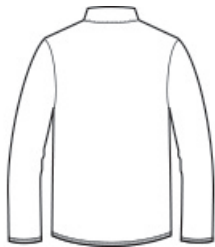
### CARE INSTRUCTIONS

Machine wash cold with like colors; do not use fabric softener; only non-chlorine bleach, when needed; tumble dry low; remove promptly; cool iron, if necessary; do not dry clean.

### Sketches



front



back

# SPEC SHEET + MEASUREMENTS



## Sport-Tek® Triumph 1/4-Zip Pullover. ST281

### PRODUCT MEASUREMENTS

	XS	S	M	L	XL	2XL	3XL	4XL
Body Length at Back	28 1/4	29 1/4	30 1/4	31 1/4	32 1/4	33 1/4	33 3/4	34 1/4
Chest	20	21 1/2	23	24 1/2	26	27 1/2	29 1/2	31 1/2
Sleeve Length	34 1/2	35 1/4	36	36 3/4	37 1/2	38 1/4	39	39 3/4

**Body Length at Back:** Measured from high point shoulder to finished hem at back.

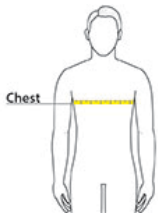
**Chest:** Measured across the chest one inch below armhole when laid flat.

**Sleeve Length:** Start at center of neck and measure down shoulder, down sleeve to hem.

### SIZE CHARTS

	XS	S	M	L	XL	2XL	3XL	4XL
Chest	32-34	35-37	38-40	41-43	44-46	47-49	50-53	54-57

### HOW TO MEASURE



#### CHEST

Measure under the arm and around the fullest part of the chest with arms down, keeping tape horizontal.

# SPEC SHEET + MEASUREMENTS



Sport-Tek® Triumph 1/4-Zip Pullover. ST281

## COLORS

---

Please note: PMS code information is shown only when an exact match is available.

				
Black PMS BLACK C	Black Heather PMS BLACK C	Dark Grey Heather PMS COOL GRAY 11C	Navy PMS 5255C	Olive Heather PMS 7764C