

SPEC SHEET + MEASUREMENTS

PORT AUTHORITY.

Port Authority® Enhanced Visibility Challenger™ Jacket with Reflective Taping. SRJ754

Product photo



Our popular water- and wind-resistant jacket in colors for enhanced visibility.

- Durable 100% polyester water resistant shell
- 9.3-ounce, 100% polyester fleece body lining
- 2-in. reflective taping on front, back and sleeves
- Polyester sleeve lining for easy on/off
- Dyed-to-match center front Vislon® zipper
- Rib knit cuffs and waistband
- Slash zippered pockets, interior zippered pocket
- Port Pocket™ for decoration access
- Non-ANSI

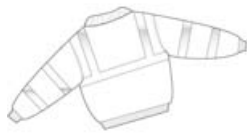
CARE INSTRUCTIONS

Machine wash cold, gentle cycle. Tumble dry low. Cool iron if needed. Do not bleach.

Sketches



front



back

SPEC SHEET + MEASUREMENTS

PORT AUTHORITY

Port Authority® Enhanced Visibility Challenger™ Jacket
with Reflective Taping. SRJ754

PRODUCT MEASUREMENTS

	XS	S	M	L	XL	2XL	3XL	4XL	5XL	6XL
Chest	22 1/2	24	25 1/2	27	28 1/2	30	31 1/2	33	37	38 1/2
Sleeve Length	33	34 1/2	36	36 1/2	38	39	39 1/2	40	42	42 1/2
Body Length at Back	26 1/2	27	27 1/2	28	29	29 1/2	30 1/2	30 1/2	33	34

Chest: Measured across the chest one inch below armhole when laid flat.

Sleeve Length: Start at center of neck and measure down shoulder, down sleeve to hem.

Body Length at Back: Measured from high point shoulder to finished hem at back.

SIZE CHARTS

	XS	S	M	L	XL	2XL	3XL	4XL	5XL	6XL	7XL	8XL	9XL	10XL
Chest	32-34	35-37	38-40	41-43	44-46	47-49	50-52	54-57	58-60	61-63	64-66	67-69	70-72	73-75

SPEC SHEET + MEASUREMENTS

PORT AUTHORITY

Port Authority® Enhanced Visibility Challenger™ Jacket
with Reflective Taping. SRJ754

HOW TO MEASURE



CHEST

Measure under the arm and around the fullest part of the chest with arms down, keeping tape horizontal.

COLORS

Please note: PMS code information is shown only when an exact match is available.



Safety
Orange/
Reflective



Safety Yellow/
Reflective