

SPEC SHEET + MEASUREMENTS



Nike Long Sleeve Dri-FIT Stretch Tech Polo. 466364

Product photo



Long sleeves elevate this polo to another level of sophistication while Dri-FIT moisture management technology adds unparalleled performance. Stretch fabric for hassle-free swinging motion.

- 5-ounce, 100% polyester Dri-FIT fabric
- Flat knit collar and cuffs
- Heat transfer label for tag-free comfort
- Three-button placket
- Dyed-to-match buttons on White, Black and Midnight Navy
- White buttons on Varsity Red, Anthracite and Blue Sapphire
- Side vents
- Contrast embroidered Swoosh logo on lower left sleeve

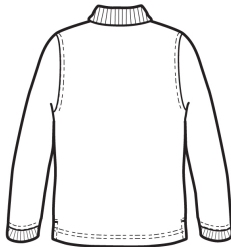
CARE INSTRUCTIONS

Machine wash cold. Wash inside out; wash with like colors. Do not use softeners. Do not use bleach. Tumble dry low. Do not iron. Do not dry clean.

Sketches



front



back

SPEC SHEET + MEASUREMENTS



Nike Long Sleeve Dri-FIT Stretch Tech Polo. 466364

PRODUCT MEASUREMENTS

	XS	S	M	L	XL	2XL	3XL	4XL
Chest	19	20 1/2	22	23 1/2	25	26 1/2	28	29 1/2
Sleeve Length from Center Back	33 1/4	34	34 3/4	35 1/2	36 1/2	37 1/2	38 1/2	39 1/2
Body Length at Back	27 1/4	28 1/2	29 1/2	30 1/2	32	33 1/2	34 1/2	35 1/2

Chest: Measured across the chest one inch below armhole when laid flat.

Sleeve Length from Center Back: Measure from Center Back neck to shoulder point to sleeve hem.

Body Length at Back: Measured from high point shoulder to finished hem at back.

SIZE CHARTS

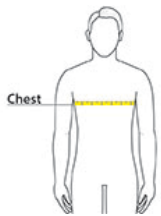
	XS	S	M	L	XL	2XL	3XL	4XL
Chest	32-35	35 - 37 1/2	37 1/2 - 41	41 - 44	44 - 48 1/2	48 1/2 - 53 1/2	53 1/2 - 58	58 - 63

SPEC SHEET + MEASUREMENTS



Nike Long Sleeve Dri-FIT Stretch Tech Polo. 466364

HOW TO MEASURE



CHEST

Measure under the arm and around the fullest part of the chest with arms down, keeping tape horizontal.

COLORS

Please note: PMS code information is shown only when an exact match is available.



Anthracite
PMS 432C



Black
PMS
PROCESS
BLACK C



Blue Sapphire
PMS 661C



Midnight Navy
PMS 2767C



Varsity Red
PMS 704C



White