

SPEC SHEET + MEASUREMENTS

SPORT-TEK

Sport-Tek® Dry Zone® Raglan Polo. T475

Product photo



Known for superior breathability, these polos not only wick moisture, they fight odor.

- 3.9-ounce, 100% polyester mini pique
- Tag-free label
- Flat knit collar
- 3-button placket
- Dyed-to-match buttons
- Double-needle sleeves and hem
- Side vents

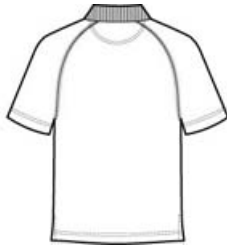
CARE INSTRUCTIONS

Machine wash cold, gentle cycle. Do not bleach. Cool iron, if needed. Do not dry clean. Wash and dry with like colors.

Sketches



front



back

SPEC SHEET + MEASUREMENTS



Sport-Tek® Dry Zone® Raglan Polo. T475

PRODUCT MEASUREMENTS

	XS	S	M	L	XL	2XL	3XL	4XL
Chest	18 1/2	20	21 1/2	23	24 1/2	26	28	30
Sleeve Length	17	18	19	20	21	22	22 3/4	23 1/2
Body Length at Back	28	29	30	31	32	33	33 1/2	34

Chest: Measured across the chest one inch below armhole when laid flat.

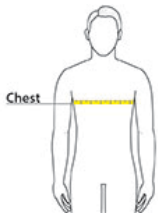
Sleeve Length: Start at center of neck and measure down shoulder, down sleeve to hem.

Body Length at Back: Measured from high point shoulder to finished hem at back.

SIZE CHARTS

	XS	S	M	L	XL	2XL	3XL	4XL
Chest	30-32	33-36	37-39	40-42	43-45	46-48	49-52	54-57

HOW TO MEASURE



CHEST

Measure under the arm and around the fullest part of the chest with arms down, keeping tape horizontal.

SPEC SHEET + MEASUREMENTS



Sport-Tek® Dry Zone® Raglan Polo. T475

COLORS

Please note: PMS code information is shown only when an exact match is available.



Black
PMS BLACK
C



Forest Green
PMS 553C



Kelly Green
PMS 341C



Maroon
PMS 504C



Purple
PMS 7672C



True Navy
PMS 533C



True Red
PMS 200C



True Royal
PMS 7687C

White