

SPEC SHEET + MEASUREMENTS



OGIO® Women's Commuter Woven Tunic. LOG1002

Product photo



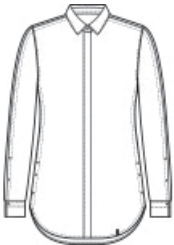
The go-to shirt for her designed for mobility and stretch without sacrificing the iconic OGIO aesthetic.

- 3.8-ounce, 56/38/6 cotton/poly/spandex
- Mitered woven label
- Covered center-front placket with two pearlized buttons at the top
- Seam sleeve panels with top stitching
- Button-through sleeve plackets
- Two-button adjustable cuffs
- Side vents with pearlized buttons
- Rounded shirttail hem
- Woven OGIO badge at front hem
- Tunic length

CARE INSTRUCTIONS

Machine wash cold with like colors, only non-chlorine bleach if needed. Tumble dry low, warm iron if needed.

Sketches



front



back

SPEC SHEET + MEASUREMENTS



OGIO® Women's Commuter Woven Tunic. LOG1002

PRODUCT MEASUREMENTS

	XS	S	M	L	XL	2XL	3XL	4XL
Body Length at Back	30 1/2	31	31 1/2	32	32	32 1/2	32 1/2	33
Bust	19	20	21	22 1/2	24	25 1/2	27 1/2	29 1/2
Sleeve Length from Center Back	31 1/2	32	32 1/2	33 1/8	33 3/4	34 3/8	34 3/4	35 1/8

Body Length at Back: Measured from high point shoulder to finished hem at back.

Bust: Measured across the chest one inch below armhole when laid flat.

Sleeve Length from Center Back: Measure from Center Back neck to shoulder point to sleeve hem.

SIZE CHARTS

	XS	S	M	L	XL	2XL	3XL	4XL
Size	2	4/6	8/10	12/14	16/18	20/22	24/26	28/30
Bust	32-34	35-36	37-38	39-41	42-44	45-47	48-51	52-55

SPEC SHEET + MEASUREMENTS



OGIO® Women's Commuter Woven Tunic. LOG1002

HOW TO MEASURE



BUST

Measure under the arm and around the fullest part of the bust with arms down, keeping tape horizontal.

COLORS

Please note: PMS code information is shown only when an exact match is available.



Blacktop
PMS BLACK
C



Gear Grey
Heather
PMS COOL
GREY 10C



White